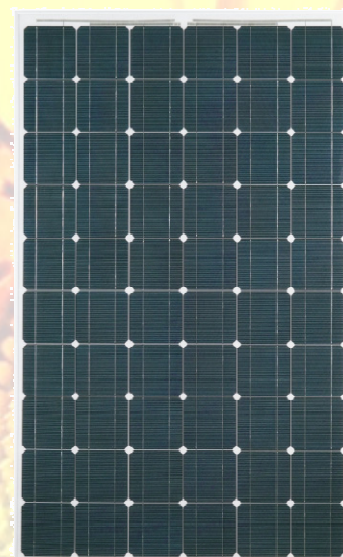




## AS-6M30 Amerisolar

Amerisolar’s photovoltaic modules are designed for large electrical power requirements. With a 25 year warranty, AS-6M30 offers high-powered, reliable performance for solar projects, both on- and off-grid.

- Solar Cell: High efficiency solar cells ensure high performance of solar module and create maximum power output.
- Low iron tempered glass: Anti-reflecting coating and high transmission rate glass increase the power output and mechanical strength of solar module.
- Aluminum frame: Without screw, corner connection. 10 holes on the frame can be installed easily.
- Superior Junction box: Multi function junction box with water proof capabilities.
- Long lifespan:  $\geq 25$ Years.
- Tolerance:  $\pm 3\%$ .
- Good performance of preventing from atrocious weather such as wind and hails.
- Resisting moisture and etching effectively, not effect by geology.
- The certificate issued by international authority: CE, TUV, IEC, ISO9001.



### Electrical characteristics

$P_{max}$ ,  $V_{oc}$ ,  $I_{sc}$ ,  $V_{mp}$  and  $I_{mp}$  at STC (1000W/m<sup>2</sup>, 25±2°C, AM 1.5);

Maximum Power ( $P_{max}$ )	200W	205W	210W	215W	220W	225W	230W	235W	240W
Open Circuit Voltage ( $V_{oc}$ )	36.2V	36.3V	36.4V	36.5V	36.6V	36.8V	36.9V	37.0V	37.1V
Short Circuit Current ( $I_{sc}$ )	7.50A	7.65A	7.80A	7.95A	8.10A	8.16A	8.31A	8.42A	8.52A
Maximum Power Voltage ( $V_{mp}$ )	29.6V	29.7V	29.8V	29.9V	30.0V	30.1V	30.2V	30.3V	30.3V
Maximum Power Current ( $I_{mp}$ )	6.76A	6.90A	7.05A	7.20A	7.34A	7.48A	7.62A	7.76A	7.92A
Module Efficiency (%)	12.1	12.4	12.7	13.0	13.3	13.6	13.9	14.2	14.5

### Temperature Coefficients

Temperature Coefficients of $P_m$	-0.40 %/°C
Temperature Coefficients of $V_{oc}$	-0.38 %/°C
Temperature Coefficients of $I_{sc}$	+0.04 %/°C
Temperature Coefficients of $I_m$	+0.04 %/°C
Temperature Coefficients of $V_m$	-0.38 %/°C

### Absolute Maximum Limits

Maximum System Voltage	1000V DC
Module Operating Temperature	-40°C to +85°C
Noct (DEGC.)	45°C±3°C

### WARRANTY

- Product: 5 years
- Power Output:  
90%----10 years  
80%----25 years



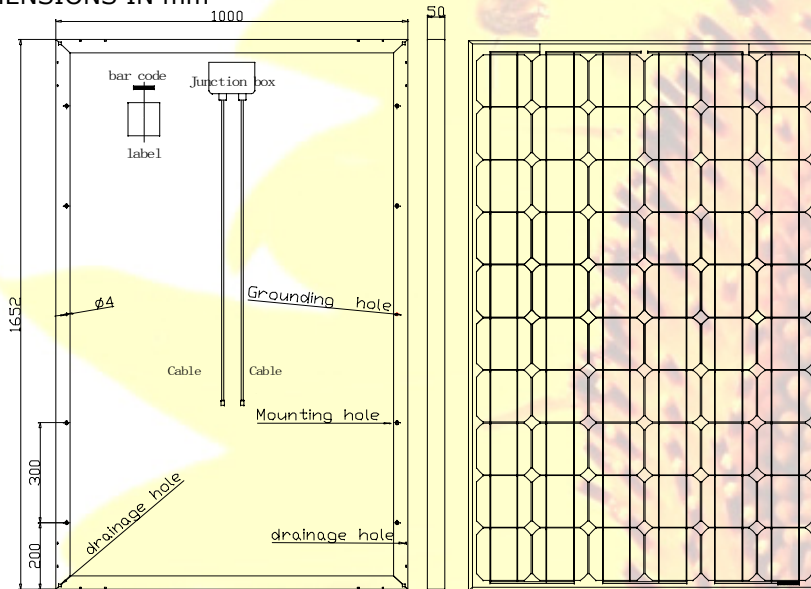
Passionately  
committed to  
delivering innovative  
energy solution

**Mechanical characteristics**

Cell Technology	156mmx156mm [6.14inx6.14in]	Mono-crystal silicon
Number of Cells (Pcs)	60 (6x10)	
Dimensions	1652mmx1000mmx50mm	
Weight	22kg	
Frame	Aluminium-alloy	
Length of Cables (mm)	900mm	
Allowable Hail Load	Steel ball fall down from 1m height	
Surface Maximum Load Capacity	60m/s(540kg/m <sup>2</sup> )	

**Basic Dimensions**

ALL DIMENSIONS IN mm



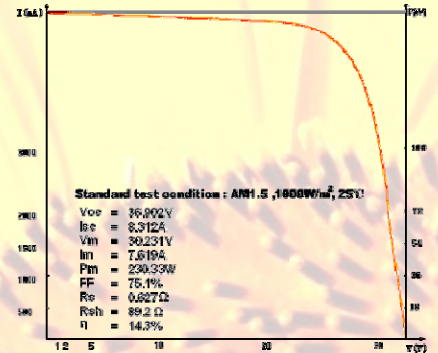
Rear

Side

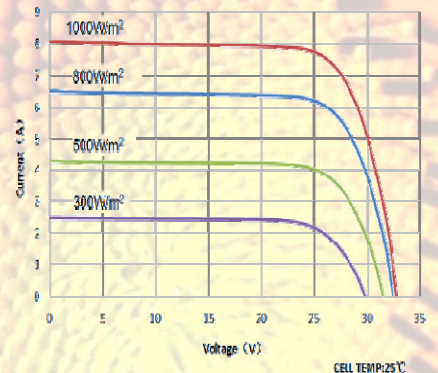
Front

1. Front: tempered solar glass 3.2mm
2. EVA
3. 60 high efficiency solar cells  
156mm X 156mm
4. EVA
5. Rear: laminate (weatherproof and waterproof)

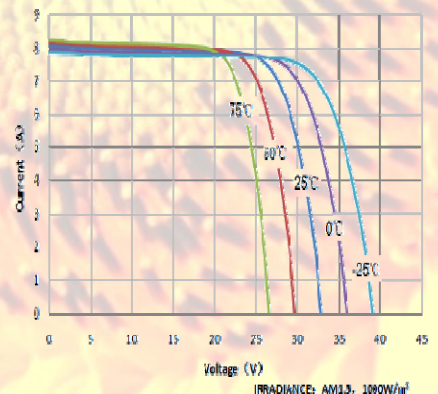
**I-V curves**



Module at STC



Various Irradiance Levels



Various Temperatures

**Worldwide Energy and Manufacturing USA, Inc.**

408 N. Canal Street Unit A & B, South San Francisco, CA 94080

Tel : +1-650-794-9888

Fax : +1-650-794-9878

[Http://www.wwmusa.com](http://www.wwmusa.com)

E-mail : [solarsales@wwmusa.com](mailto:solarsales@wwmusa.com)